



Strategy and Vision

2024 -2029

Table of Contents

1	Executive Summary
2	Introduction
3	About Boyatt Wood
4	The Council
5	Mission, Vision and Value Statements
6	Review
References	Community Survey – Key Outcomes Report
Related Policies	Code of Conduct, Standing Orders, Financial Regulations

Version Control

Version	Date approved	Minute Ref	Website updated	Next Review
V1	16/07/2024	054/24	04/09/2024	Q3 2025

1. Executive Summary

Local government has changed significantly over the last decade and it is likely that parish councils will continue to take on more responsibilities in the future

Boyatt Wood Parish Council (BWPC) Strategy and Vision provides a framework for the Council to deliver a cohesive approach for the best interests of all those who live, visit and work in Boyatt Wood. It provides an overview of how the Council plans to improve Boyatt Wood a parish in Eastleigh District.

The Council is committed to engaging with its residents, encouraging a safe parish and empowering well-being for all. To assist in enabling collective responsibility for a socially inclusive and caring community.

BWPC conducted a resident's survey and has carefully assessed the priorities, ideas, concerns and aspirations shared by the community. This feedback has been used to inform this document and sets out the goals, objectives vision, and priorities. The goals inform decision making and future activities to work towards. The objectives set out how the goals will be met.

The Council will deliver these activities either directly or in partnership with other organisations including other local authorities and voluntary groups. It will deliver a coordinated approach for the best interests of all those who live, visit and work in Boyatt Wood and make use of the Council's services.

The Strategy and Vision is a live document which will be reviewed frequently. Enabling council and residents to monitor its progression and updates.

2. Introduction

What is the purpose of Strategy?

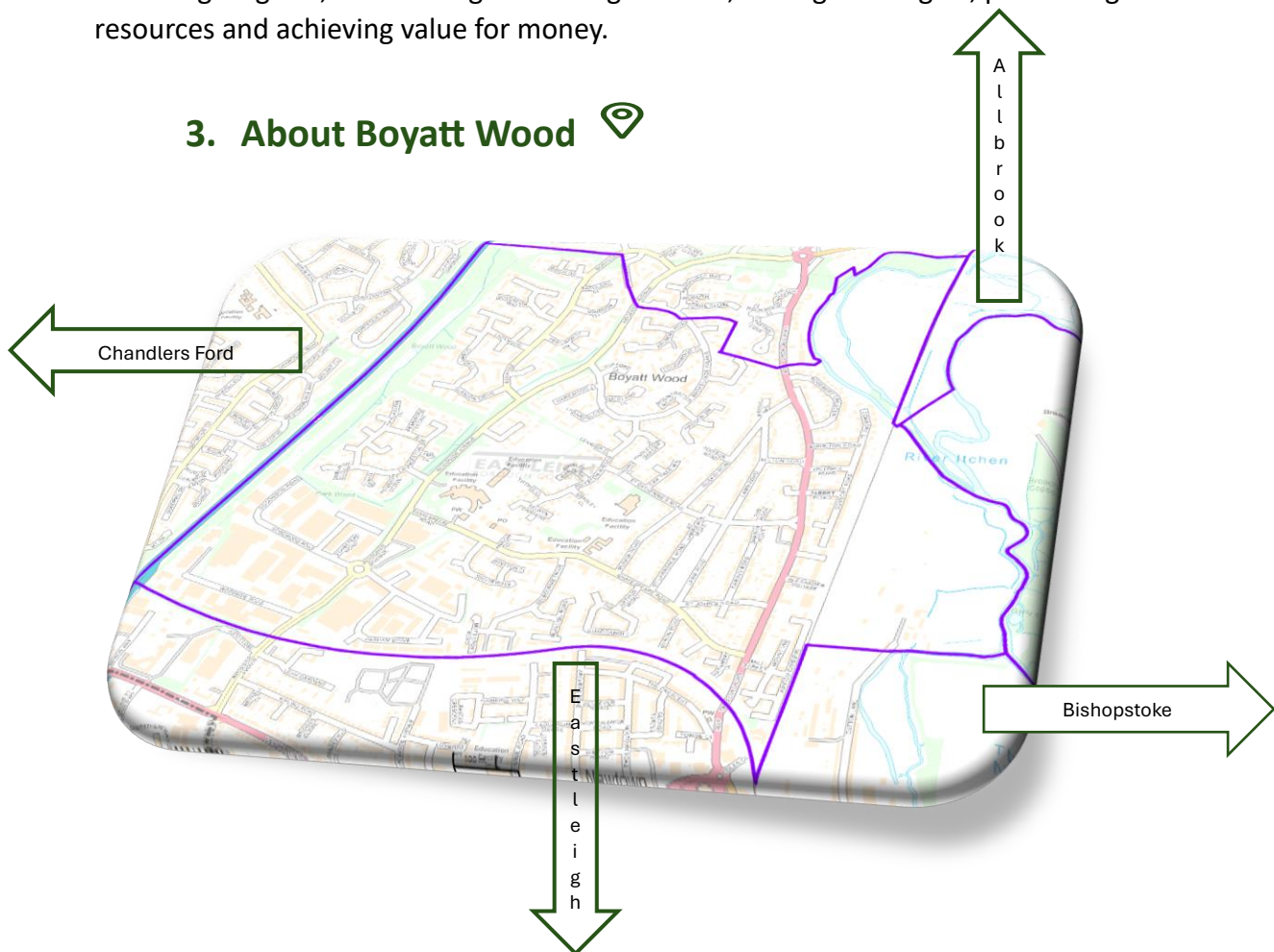
A Strategy provides a framework for BWPC to continue to work in the best interests of all who live, visit or work in the parish. It sets out the Parish Council's goals and objectives for the next five years enabling it to operate in a consistent, coordinated way.

Goals are broad, long-term outcomes that are reasonable to achieve within a time frame and with available resources. Objectives are specific and break down goals into more manageable tasks which are measurable. A strategy is a specific plan used to meet objectives and goals.

Why do we need a Strategy?

The Strategy helps to ensure that the Parish Council can take a planned approach on achieving its goals; maintaining its existing services; setting its budgets, prioritising its resources and achieving value for money.

3. About Boyatt Wood



Boyatt Wood is a residential area north-west of Eastleigh in Hampshire and is named after wooded area south of Boyatt Lane.

Boyatt Wood was originally farmland until development began in the 1970s

It has a Church, Pubs/Restaurants, local shops including Post Office, Doctors, Chemist and Veterinary




National cycle network route 23 runs through Boyatt wood

Boyatt Wood has a population of 7200 and 3100 households. Nearly equal in sexes with female to male ratio at 49.6%:50.4%. There is 26.8% of the population under age 25 and 18.5 % over 60 years of age¹.

4. The Council

How do local government authorities work?

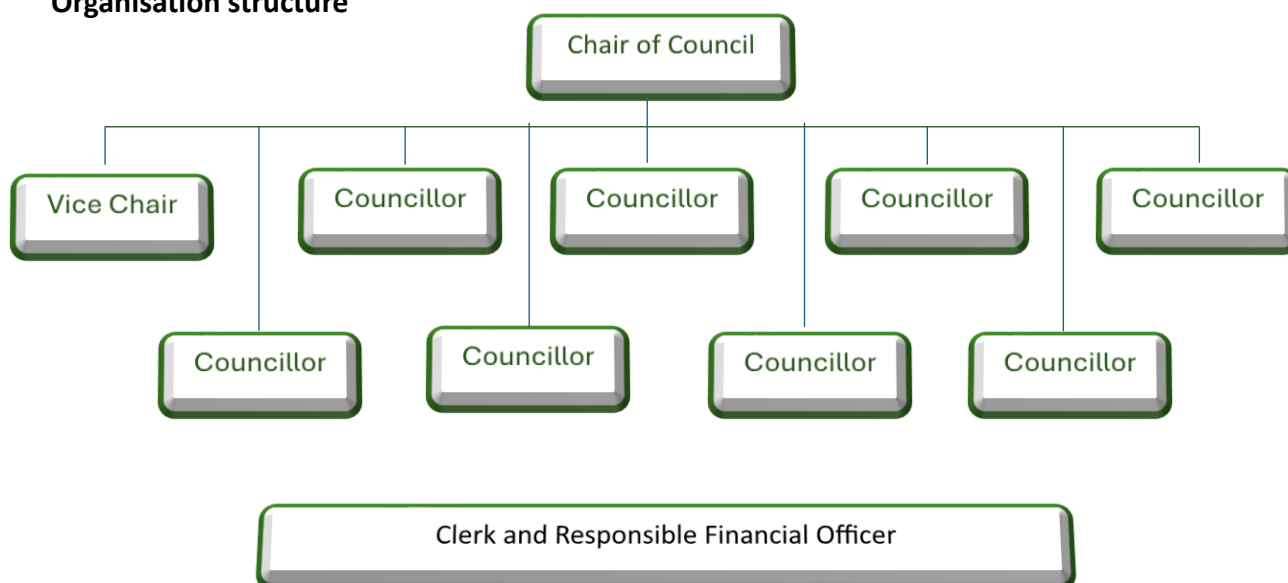
Local authorities are tiered authorities, the number of tiers may vary in parts of the country. Councillors may serve on more than one tier of local government.

Principal Authority	Local Authority	Local Council
		
<ul style="list-style-type: none"> ▪ Highest tier of local government ▪ Provide county wide services ▪ Highways, Education, Health and social care, Recycling, etc 	<ul style="list-style-type: none"> ▪ Second tier of government ▪ Provides District wide services ▪ Local Planning Authority ▪ Refuse collection, Environmental services, housing, Council tax etc 	<ul style="list-style-type: none"> ▪ First most local tier of governments ▪ Management of Assets – open spaces ▪ Local Planning Authority Consultee ▪ Represent and support the community



BWPC comprises of 10 Councillors elected and co-opted who collectively oversee the key administrative areas of the council with the priority been Governance. The Council is the corporate body and is accountable for its decisions. There is one employee who is the Parish Clerk and Responsible Financial Officer and works part-time, who administers the Councils decisions and advises the council of its powers.

Organisation structure



¹ Office for National Statistics Census 2021

BWPC meet the third Tuesday of each month at 7.00pm at St Peters Church, Shakespeare Road. The Council does not meet during the month of August. Each meeting has an element of public participation and members of the public are encouraged to attend to ask questions or make comment.

BWPC operates within a legislative framework and where empowered to do so looks after the interests of the parish, bringing any other needs of the parish to the attention of the relevant authority. It responds to consultation documents and requests from a diverse range of other bodies and authorities which includes commenting to the Local Planning Authority, Eastleigh District Council on every planning application in the parish. The Council makes decisions on items on the agenda and provides a democratic and representational voice in the best interest of the community.

The Annual Parish meeting or Community meeting is held in March each year giving the residents the opportunity to have a say on local issues, find out what the parish council has been doing and residents are given the opportunity to share their opinions on the services delivered by the council.

The Annual Meeting of the Council is held in May each year, this is where the Chair of Council is elected for the upcoming municipal year. The governance of the council is considered and approved.

The council believes that everyone should be involved in making Boyatt Wood – a place where people want to be, whether they are a resident, a local group or business. The aim is to work constructively with whoever is most appropriate, to ensure that Boyatt Wood continues to improve and develop in a sustainable, positive way.

5. Mission, Vision, and Value Statement

The Mission describes what we do.

By maintaining good corporate governance and delivering good services, BWPC seeks to improve quality of life for the businesses, visitors and residents of Boyatt Wood in a safe and welcoming environment.

The Vision describes what we want to accomplish

BWPC will strive to make Boyatt Wood a socially inclusive place where people want to live, visit and work. Working with the community to enjoy responsible environmental sustainability, addressing climate change issues and supporting health and wellbeing for now and future generations.

Value Statements are core values that underpin the Vision and our approach to the provision of services, projects and initiatives.

Core Value	Aims
Civility and Respect	<ul style="list-style-type: none"> ▪ Commitment to treating Councillors, staff, volunteers and partner organisations with civility and respect ▪ Celebrate diversity

Enabling	Health and wellbeing in a caring community embracing all residents
Encouraging	<ul style="list-style-type: none"> ▪ Economic and environmental sustainability. ▪ Community participation
Engaging	With residents, local authorities, other service providers, businesses, educational and community organisations.
One voice	<ul style="list-style-type: none"> ▪ Councillors and staff will abide by and act on all decisions of the Parish Council ▪ Transparent and accountable for all its activities
Partnership working	<ul style="list-style-type: none"> ▪ Working together with local authorities, schools and local organisations sharing responsibilities and resources in mutually supportive way. ▪ Building a strong community and community cohesion
Respond	Be responsive to the needs of the community

The Mission, Vision and Value statements have taken into consideration the findings from the Community Survey and how residents view Boyatt Wood, below is a word cloud created from the responses.



6. Review

This strategy feeds into the activities that BWPC aims to deliver, meeting its goals and objectives as set out in the Action plan. The Action Plan will be monitored and reviewed at least annually.

Action Plan

This Plan is a 'live' document that will evolve through community engagement and will assist Councillors to make decisions in the best interests of the community. As a 'live' document this Action Plan will be monitored and updated regularly to demonstrate progress, drive the budget setting process and plan upcoming activities.

Key	0-1 Year – Short Term	1-2 years – Medium term	2-5 years – Long Term
Item	Goals	Timescale	Objectives
Biodiversity			
1	Promote Biodiversity	2-5 years	<ul style="list-style-type: none"> Investigate creation of additional habitats Together with local groups enhance and develop open spaces
Community engagement			
2	Improve Website	0-1 year	Enhance website to include current accessibility requirements
3	Community updates	0-1 year	<ul style="list-style-type: none"> Produce and distribute Council newsletter Increase social media traffic Continue with Councillor Surgeries Listen and respond to residents needs
4	Open communication	0-1 year	Obtain Parish noticeboard
5	Promote engagement	Ongoing	<ul style="list-style-type: none"> Members of the public to attend council meetings and provide feedback Create community contact database
6	Commerce engagement	1-2 year	<ul style="list-style-type: none"> Support business community Create business contact database.
7	Community meeting	0-1 year	Annual meeting of Council to include Chairs Annual Report
Crime prevention			
8	Crime reduction	0-1 year	<ul style="list-style-type: none"> Support parish crime prevention initiatives Increase Neighbourhood watch members in parish Continued liaison with local police

9	Speeding/parking	Ongoing	<ul style="list-style-type: none"> • Monitor Speed indicator device findings and escalate where necessary • Direct parking enforcement officers to areas where parking regulations are frequently breached.
Environmental			
11	Environmentally friendly	1-2 years	<ul style="list-style-type: none"> • All suppliers have green credentials, support environment and seek to reduce carbon emissions • Increase Litter picking events • Adapt to climate change initiatives • Highlight environmental issues in planning applications
Governance and efficiency			
12	Ensure all BWPC policies and procedures are adhered to, implemented and updated as necessary	Ongoing	<ul style="list-style-type: none"> • New policies created to ensure robust suite of policies • Abide by statutory requirements
13	Review of Governance documentation	As per Core Document record	All Policies to be reviewed within Council term
14	Monitor new legislation	Ongoing	Access to government updates via SLCC and HALC
15	Learning and training	Ongoing	Be a learning organisation by attending training and continually developing skills
16	Implement Strategic Plan	0-1 year	<ul style="list-style-type: none"> • Action Plan to be updated annually • Measures assessed
17	Local Council Award	2-5 year	Ensuring policies and processes are best practice
18	Identify new projects	1-2 years	Annual meeting of members and staff to generate ideas
19	Pursue alternative means of funding	1-2 years	Check grants list to monitor funds that can be applied for.
20	Ensure value for money with all activities	Ongoing	<ul style="list-style-type: none"> • As per Financial Regulations • Monies invested in ethical financial products
21	Identify areas for improvement	Ongoing	BWPC can take direct action, lobby, influence or work in partnership to make improvements

Inclusivity

22	Support community events/activities that support mental health and wellbeing	1-2 years	<ul style="list-style-type: none"> • Increase the number of events/activities for a wide range of community interests • Increase range of groups and organisations to reflect demographic of community
23	Promote and support local groups and organisations	0-1 year	Increase value and number of grants issued to support community

Promote Sustainability

24	Recycling	0-1 year	Promote/provide opportunities to reduce waste and increase recycling Signpost community to recycle centres
25	Open spaces	1-2 years	Increase number of allotment plots

Wellbeing

26	Ensure all open spaces are enhanced	1-2 years	<ul style="list-style-type: none"> • Improve currently held open space including increased biodiversity • Ensure all health and safety requirements are met
27	Transfer of Assets	2-5 years	Consider receiving further open spaces from EBC, subject to health and safety requirements and special expenses budget.
28	Transportation	Ongoing	Promote the benefits of walking, cycling and use of public transport